



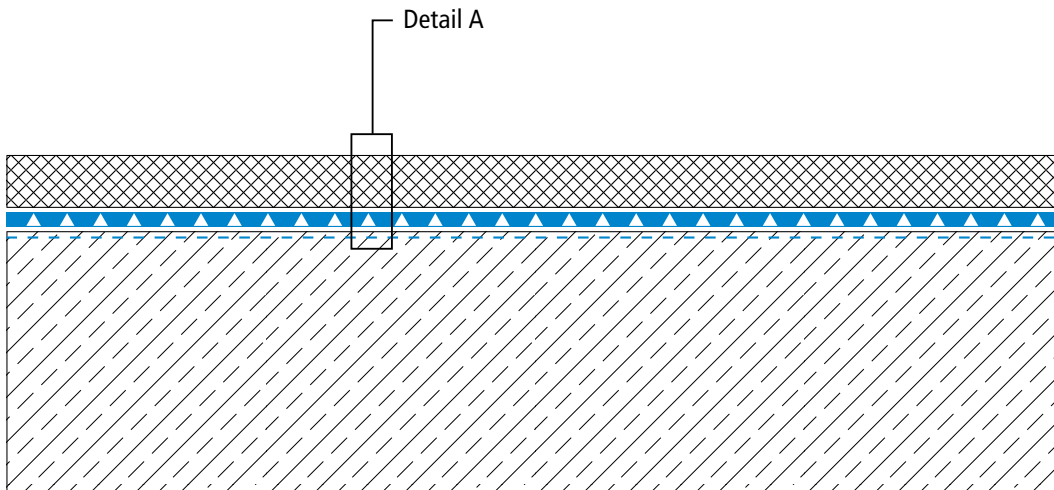
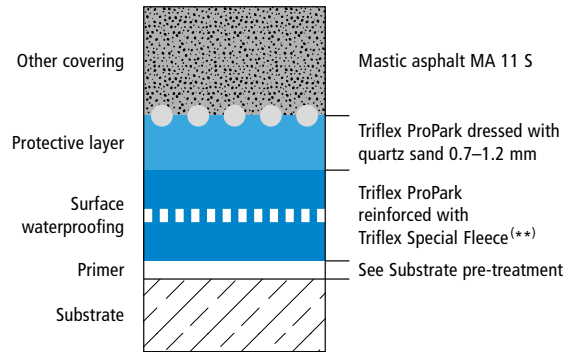
Waterproofing system under mastic asphalt (OS 10)

Triflex AWS

System drawings

Surface

System build-up – Detail A





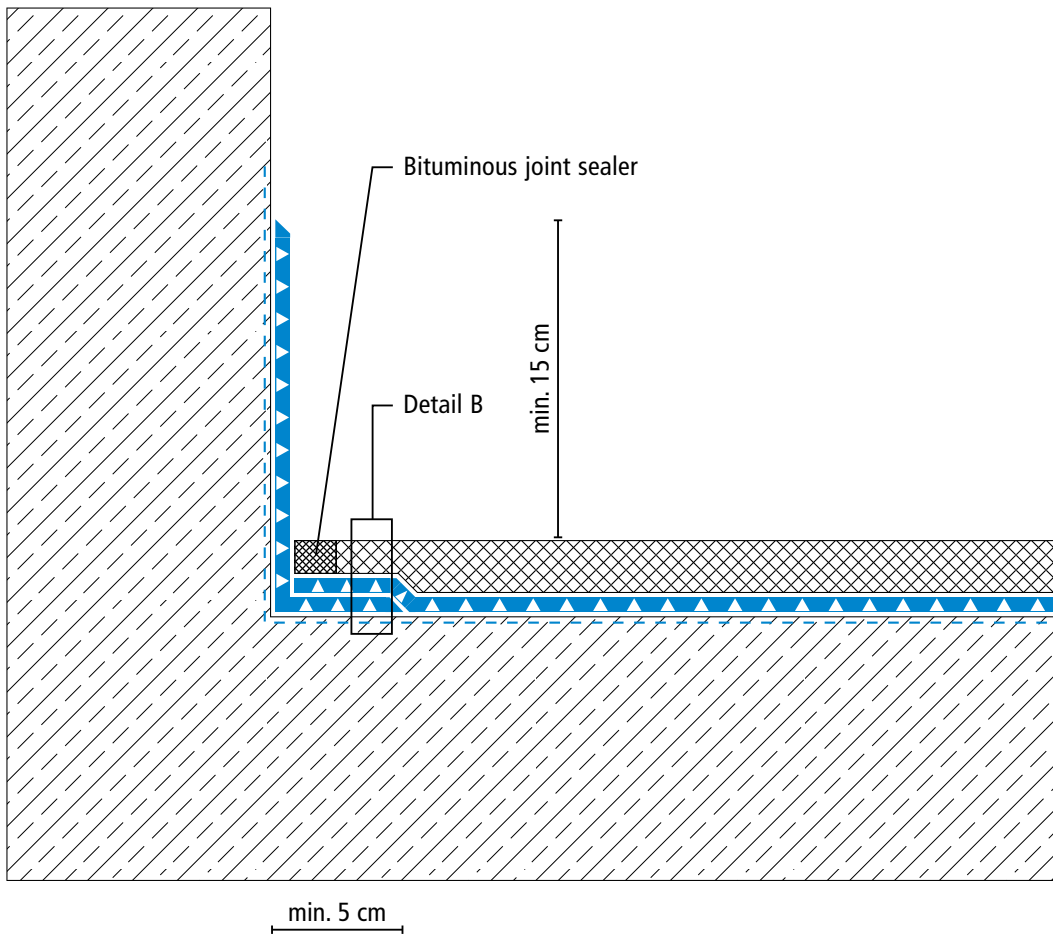
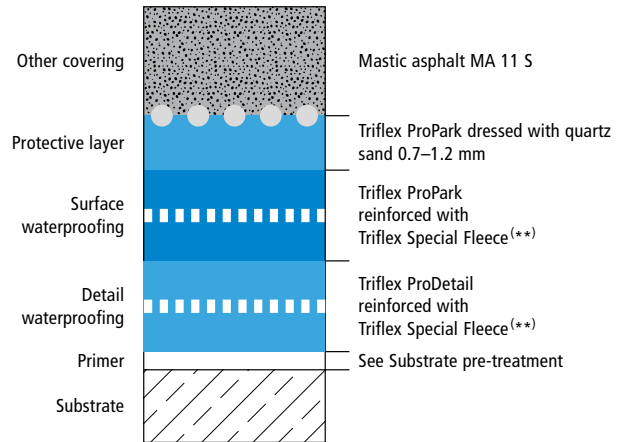
Waterproofing system under mastic asphalt (OS 10)

Triflex AWS

System drawings

Wall junction

System build-up – Detail B



(**) Triflex Special Fleece or Triflex Special Fleece PF

Height differences where the fleece overlaps are exaggerated.



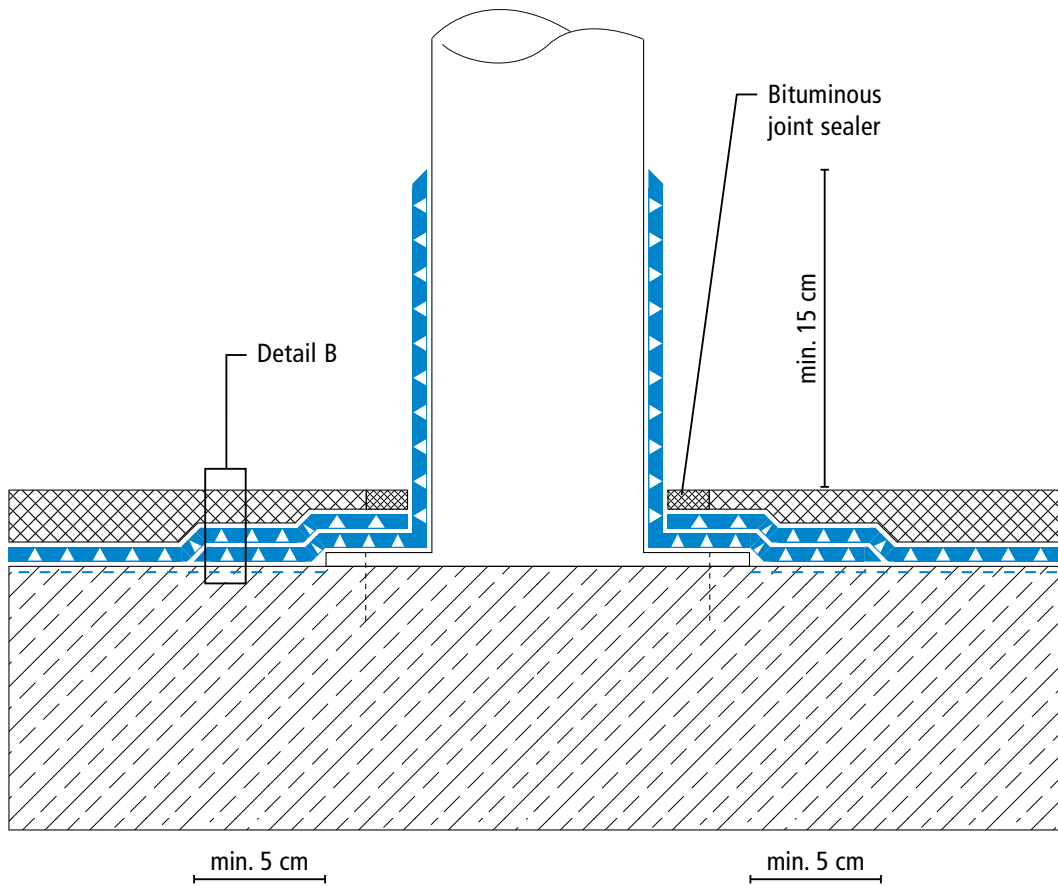
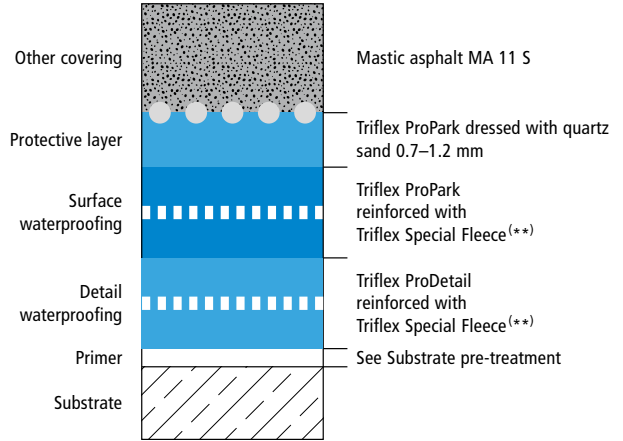
Waterproofing system under mastic asphalt (OS 10)

Triflex AWS

System drawings

Prop connector

System build-up – Detail B



(**) Triflex Special Fleece or Triflex Special Fleece PF

Height differences where the fleece overlaps are exaggerated.

Drawing no.: AWS-5203



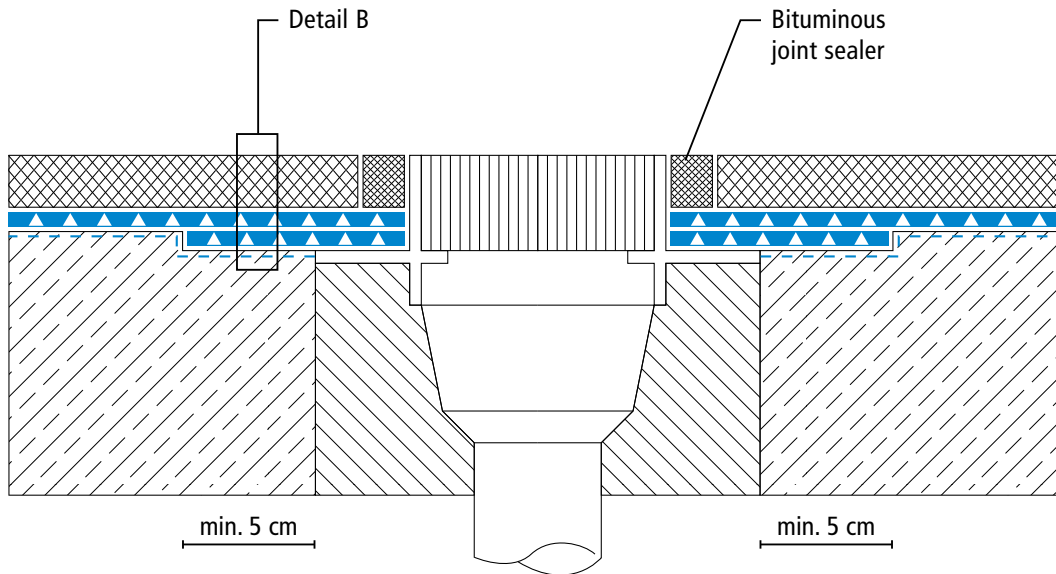
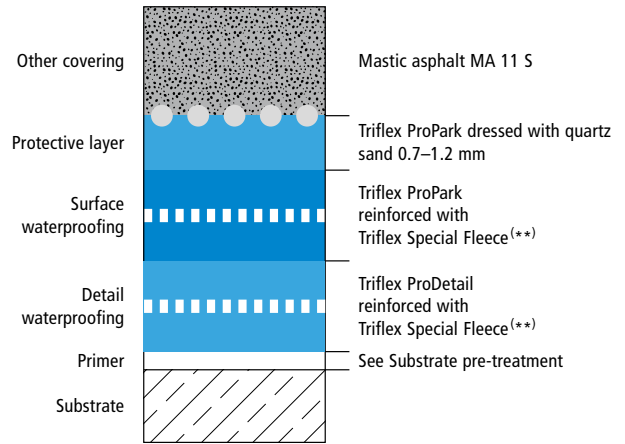
Waterproofing system under mastic asphalt (OS 10)

Triflex AWS

System drawings

Gully/Gutter

System build-up – Detail B



(**) Triflex Special Fleece or Triflex Special Fleece PF

Height differences where the fleece overlaps are exaggerated.

Drawing no.: AWS-5204



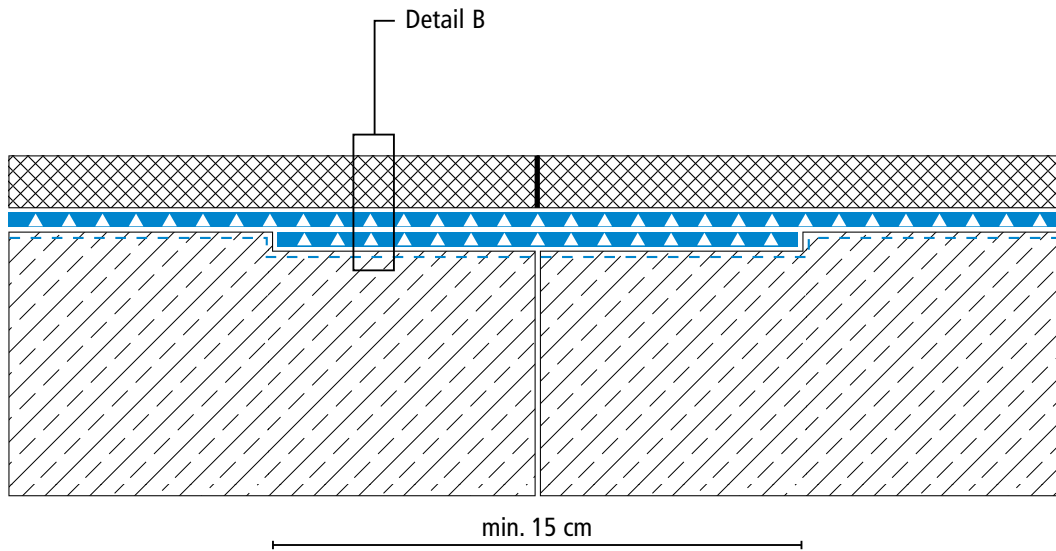
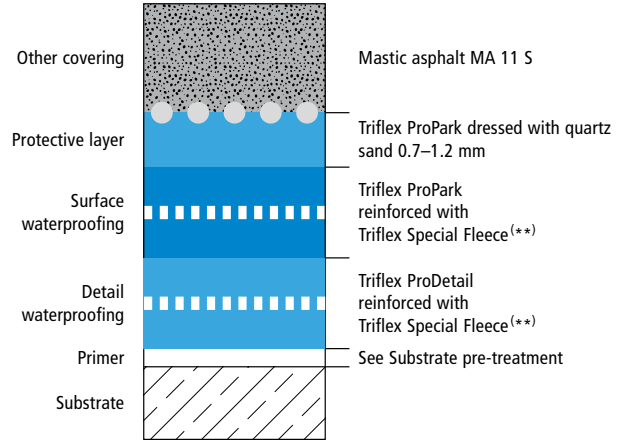
Waterproofing system under mastic asphalt (OS 10)

Triflex AWS

System drawings

Construction joint

System build-up – Detail B



(**) Triflex Special Fleece or Triflex Special Fleece PF
Height differences where the fleece overlaps are exaggerated.

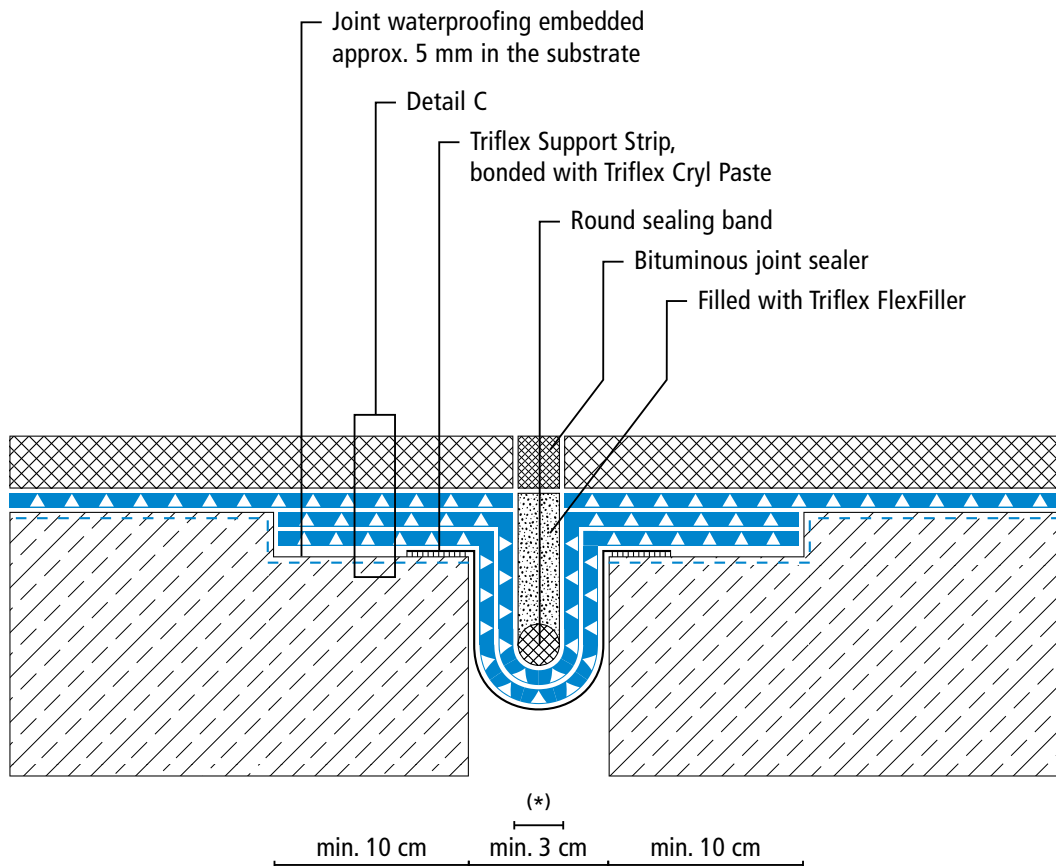
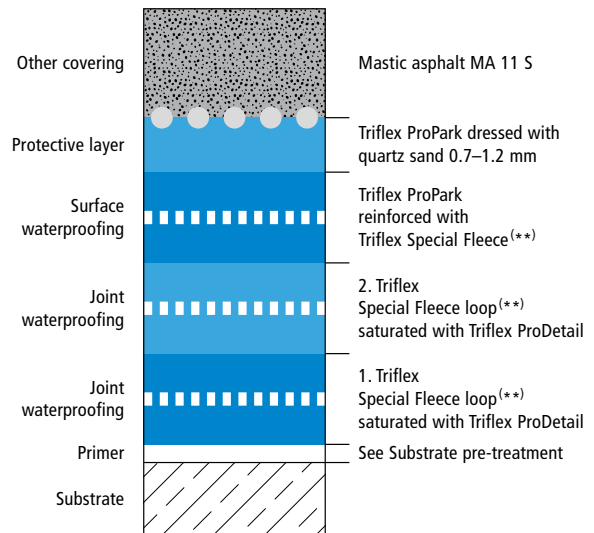
Triflex AWS



System drawings

Expansion joint surface

System build-up – Detail C



(*) Omission of surface waterproofing and protective layer (see system description)

(**) Triflex Special Fleece or Triflex Special Fleece PF

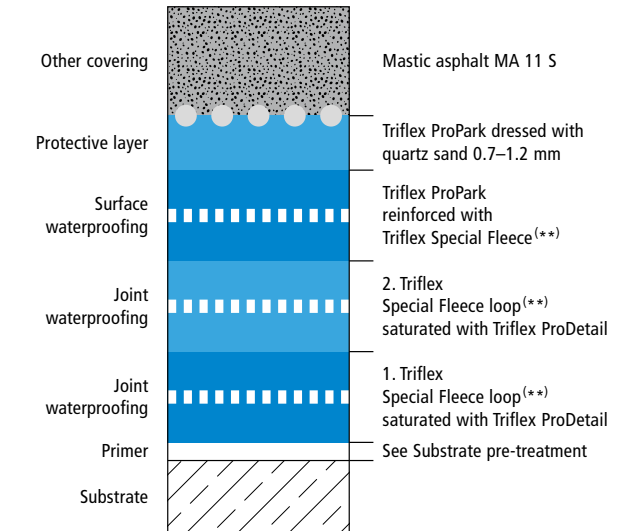
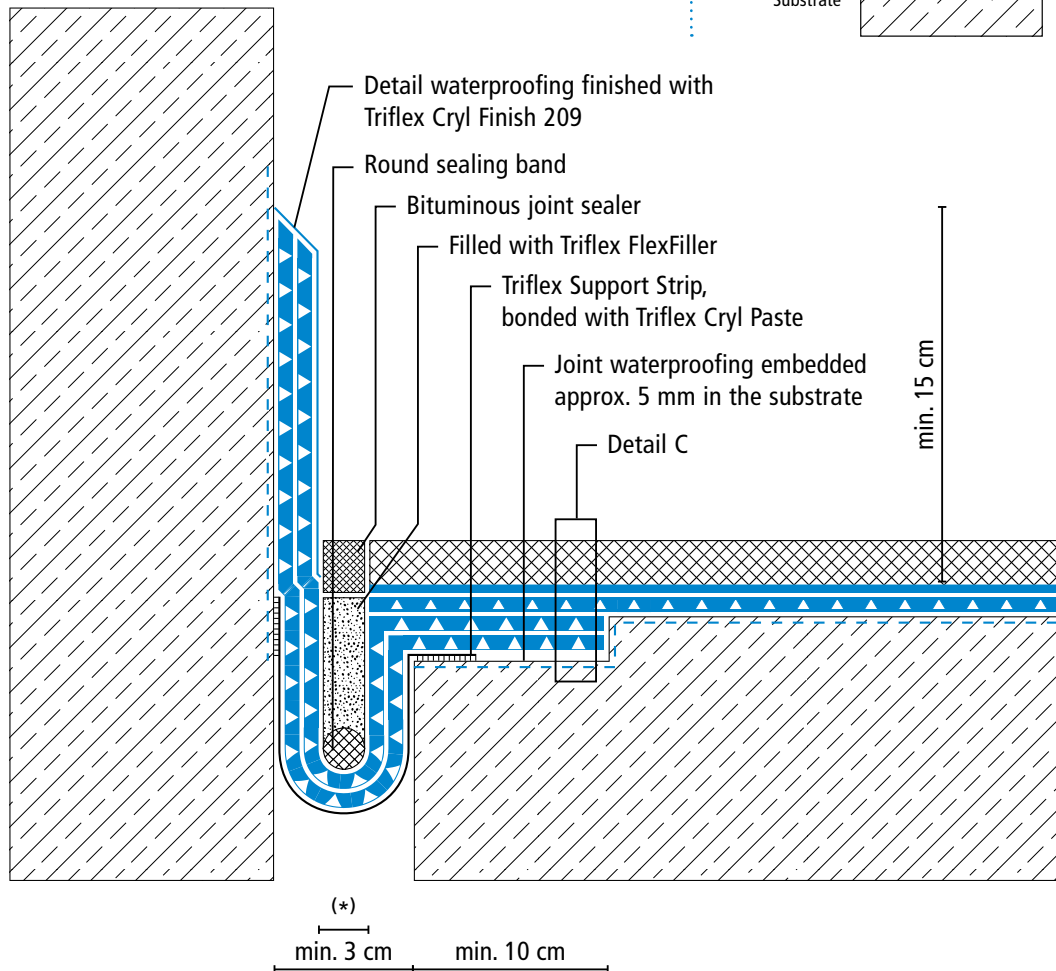
Height differences where the fleece overlaps are exaggerated.



System drawings

Expansion joint – wall junction

System build-up – Detail C



(*) Omission of surface waterproofing and protective layer (see system description)

(**) Triflex Special Fleece or Triflex Special Fleece PF

Height differences where the fleece overlaps are exaggerated.



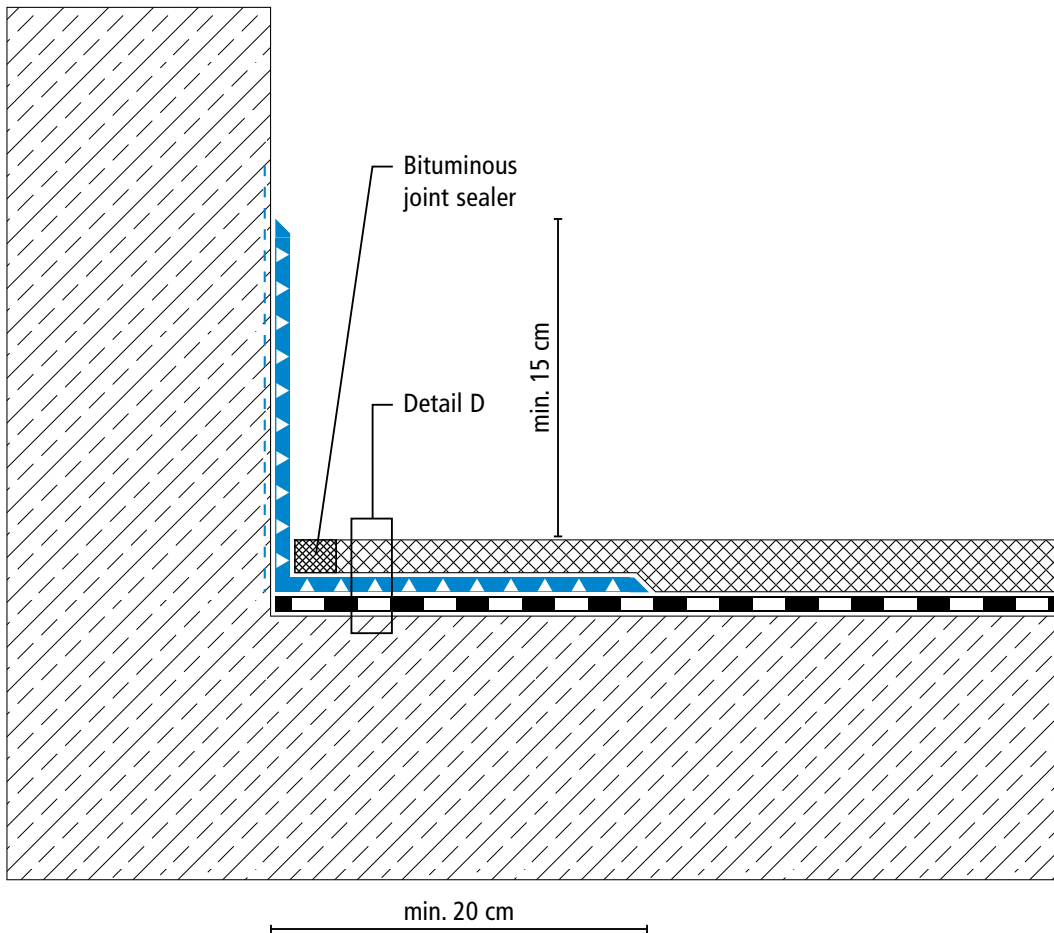
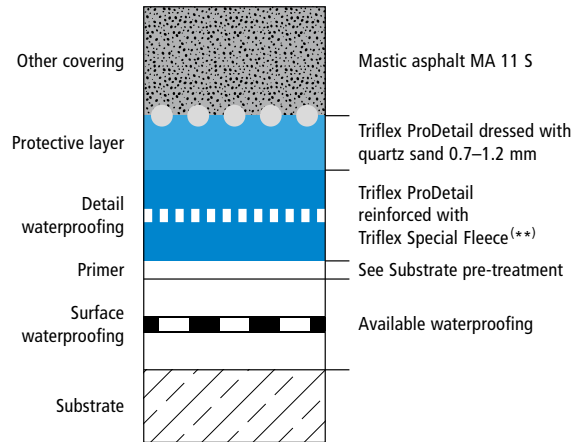
Waterproofing system under mastic asphalt (OS 10)

Triflex AWS

System drawings

Wall junction of available waterproofing

System build-up – Detail D



(**) Triflex Special Fleece or Triflex Special Fleece PF

Height differences where the fleece overlaps are exaggerated.

Drawing no.: AWS-5208



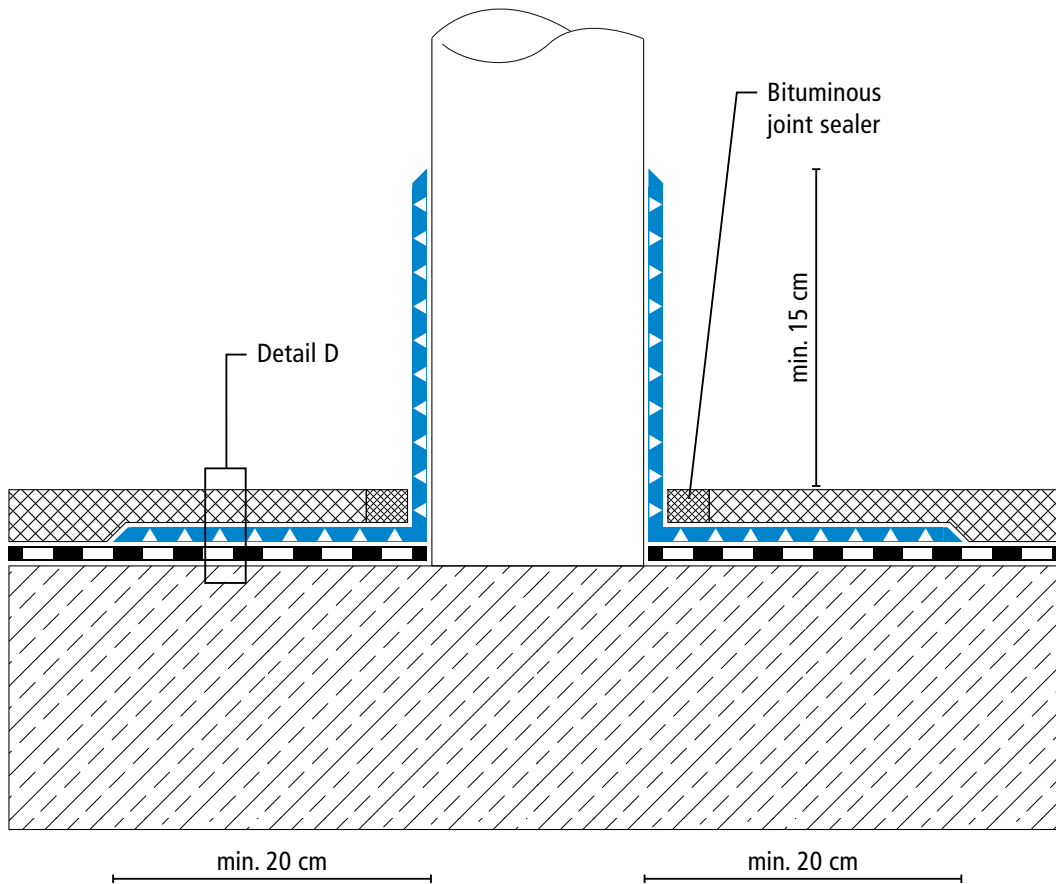
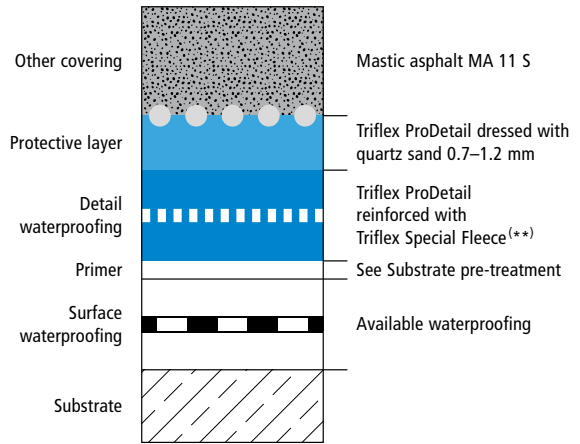
Waterproofing system under mastic asphalt (OS 10)

Triflex AWS

System drawings

Prop connector of available waterproofing

System build-up – Detail D



(**) Triflex Special Fleece or Triflex Special Fleece PF

Height differences where the fleece overlaps are exaggerated.

Drawing no.: AWS-5209