



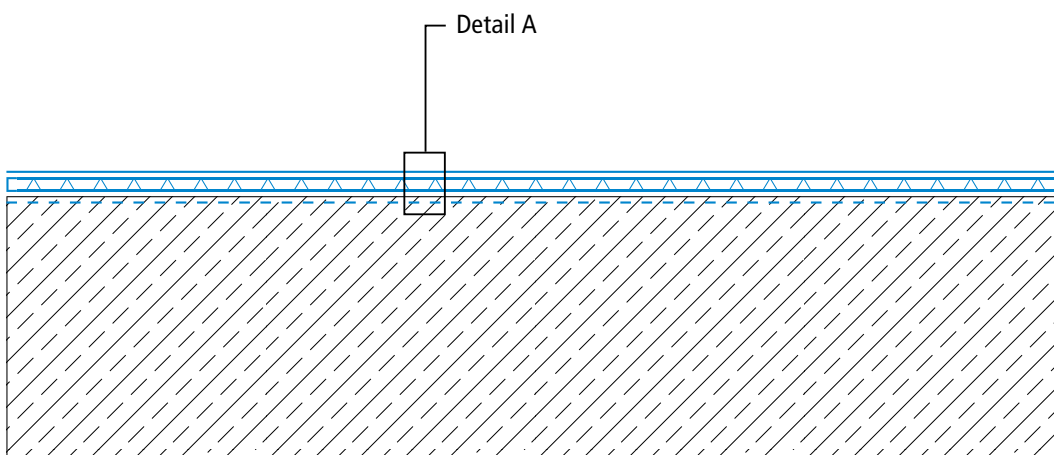
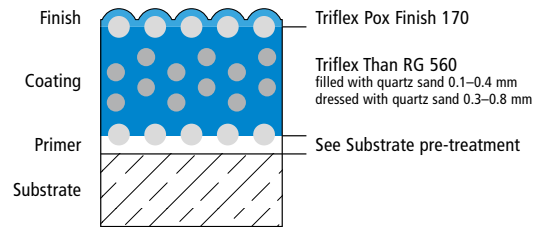
Interior deck coating system (OS 8)

Triflex CPS-F

System drawings

Surface

System build-up – Detail A



Drawing no.: CPS-F-1801

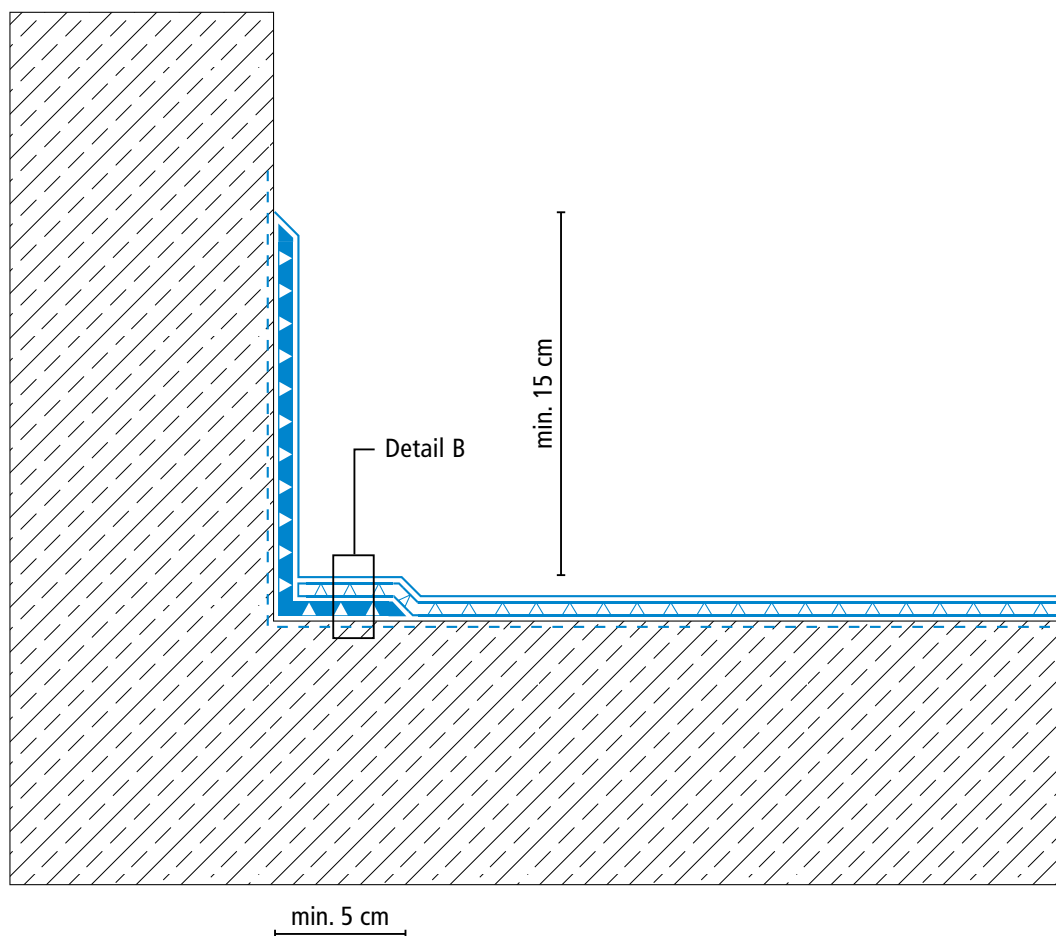
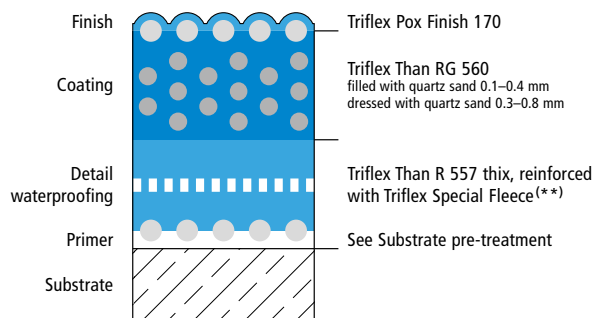
Triflex CPS-F



System drawings

Wall junction

System build-up – Detail B





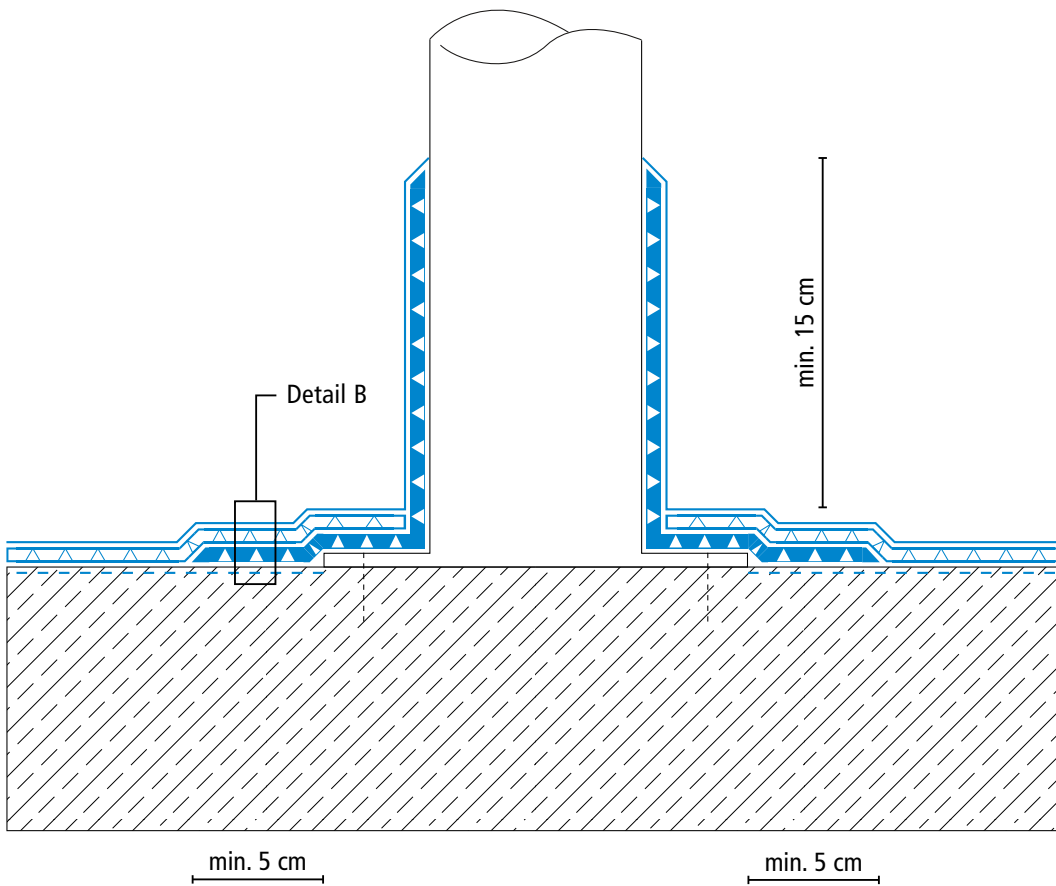
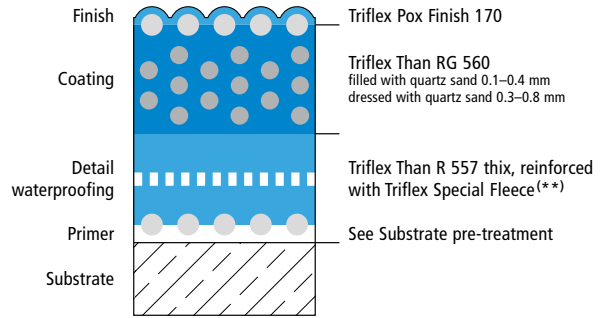
Interior deck coating system (OS 8)

Triflex CPS-F

System drawings

Prop connector

System build-up – Detail B



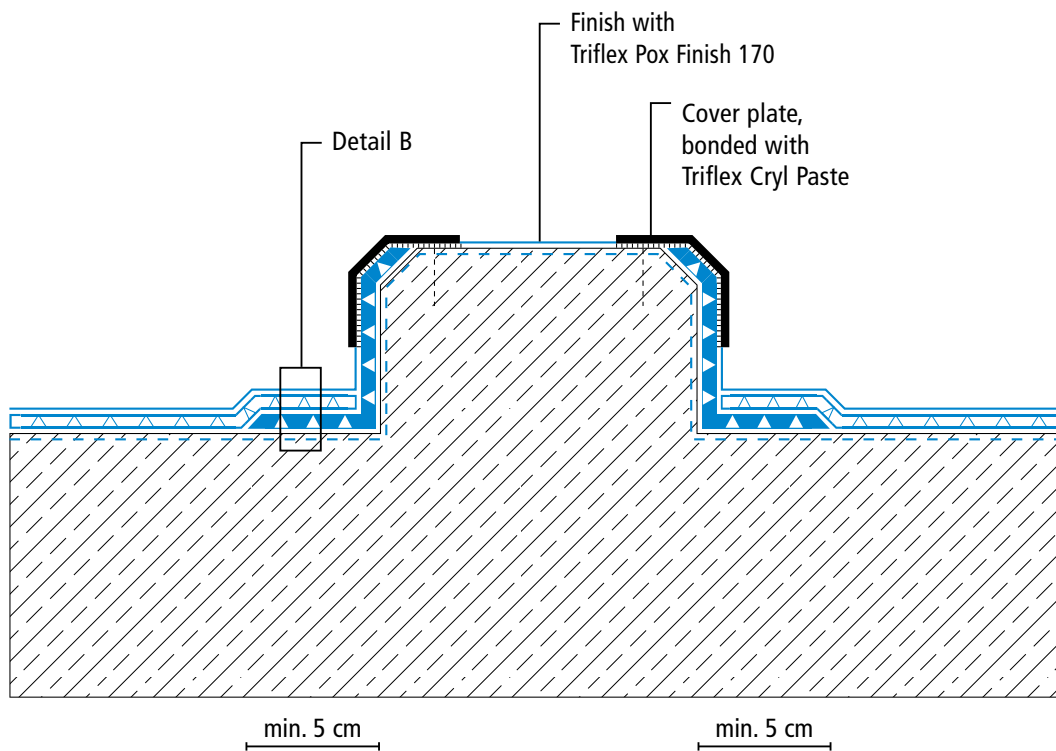
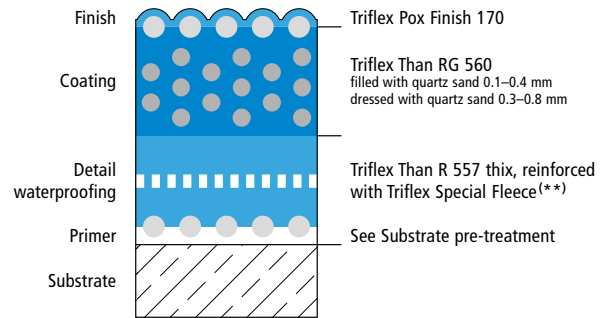
Triflex CPS-F



System drawings

Kerb

System build-up – Detail B





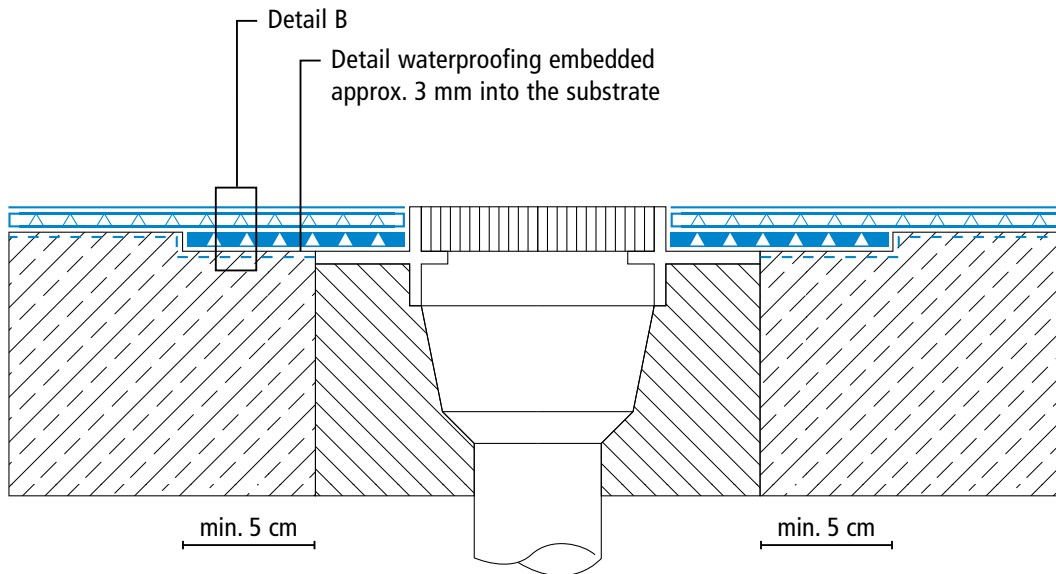
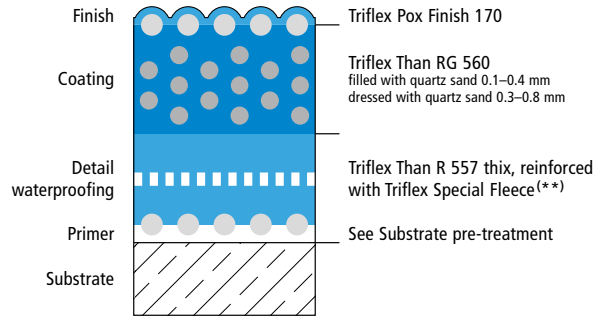
Interior deck coating system (OS 8)

Triflex CPS-F

System drawings

Gully / Gutter

System build-up – Detail B



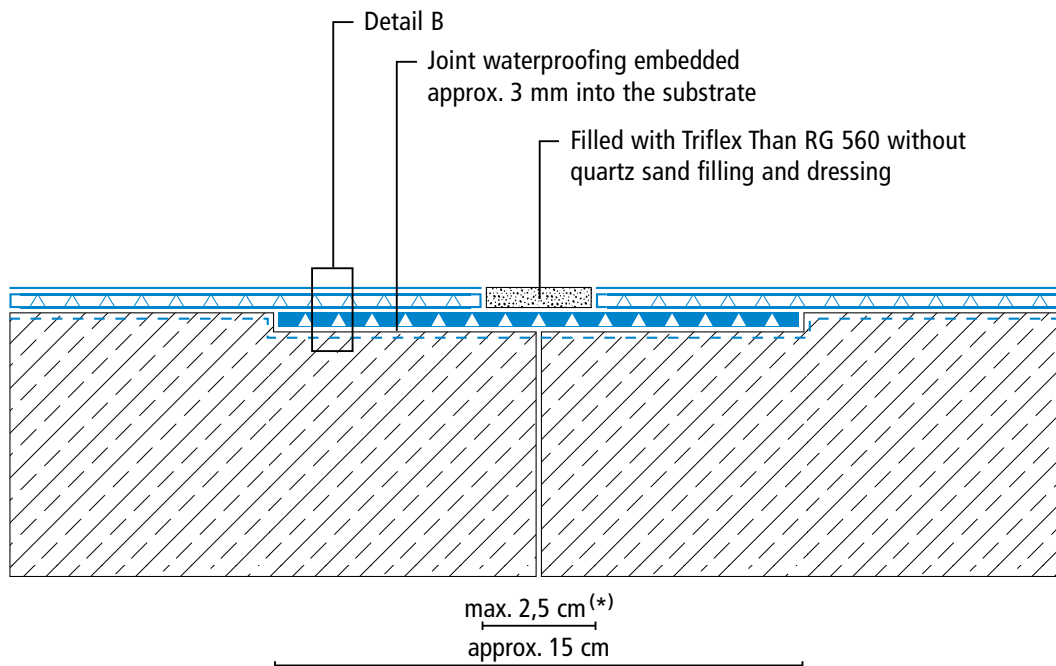
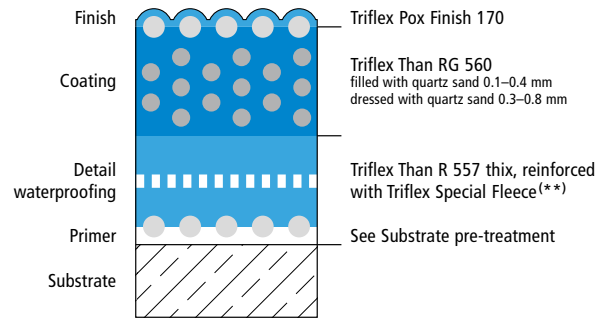
Triflex CPS-F



System drawings

Construction joint

System build-up – Detail B



(*) Omission of coating and finishing (see system description)

(**) Triflex Special Fleece or Triflex Special Fleece PF

Height differences where the fleece overlaps are exaggerated.

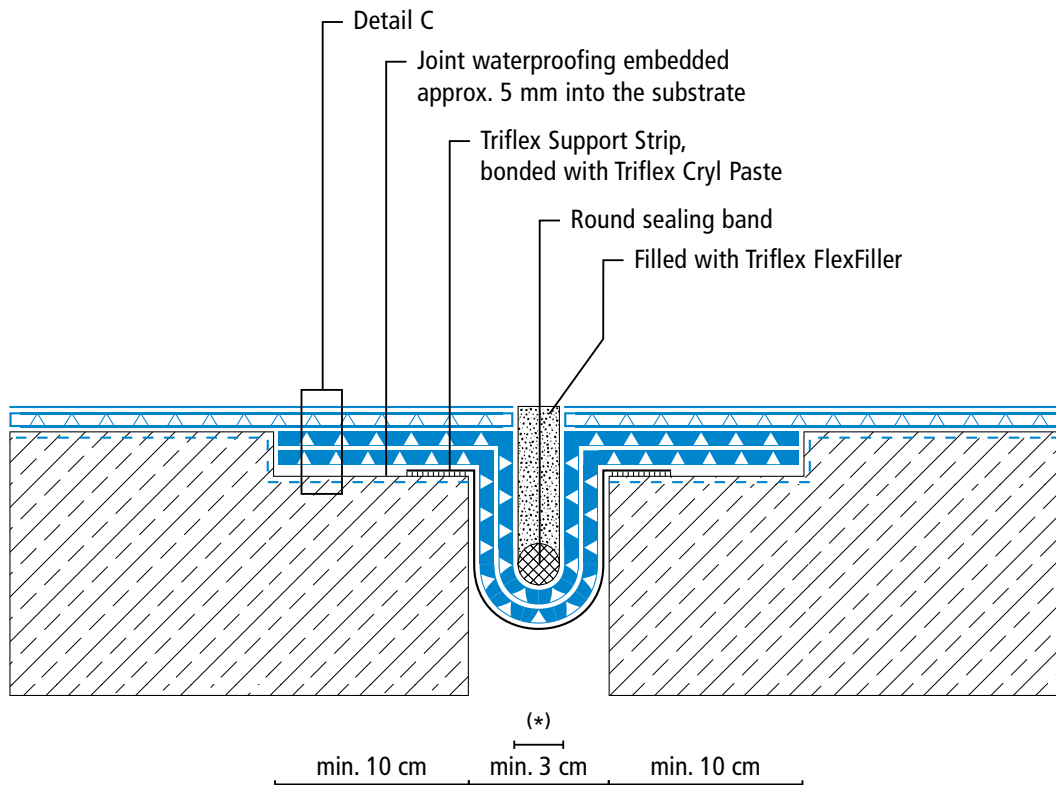
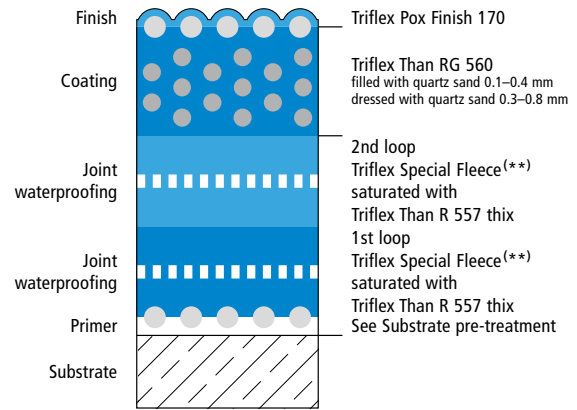
Triflex CPS-F



System drawings

Expansion joint surface

System build-up – Detail C



(*) Omission of coating and finishing (see system description)

(**) Triflex Special Fleece or Triflex Special Fleece PF

Height differences where the fleece overlaps are exaggerated.

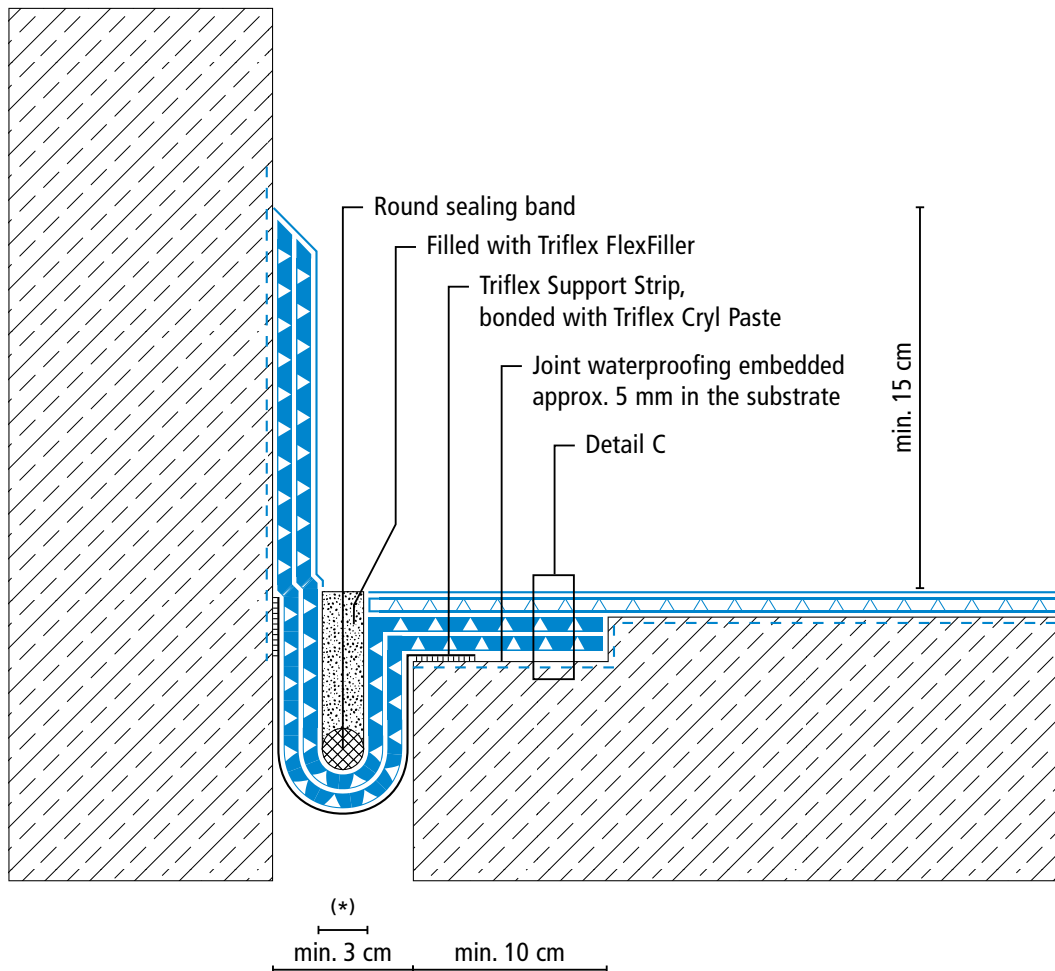
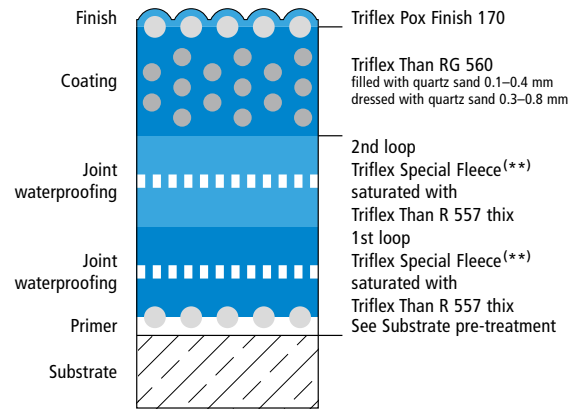
Triflex CPS-F



System drawings

Expansion joint – wall junction

System build-up – Detail C



(*) Omission of coating and finishing (see system description)

(**) Triflex Special Fleece or Triflex Special Fleece PF

Height differences where the fleece overlaps are exaggerated.